

TECE wall-mounted floor drain with Adda Tätfolie

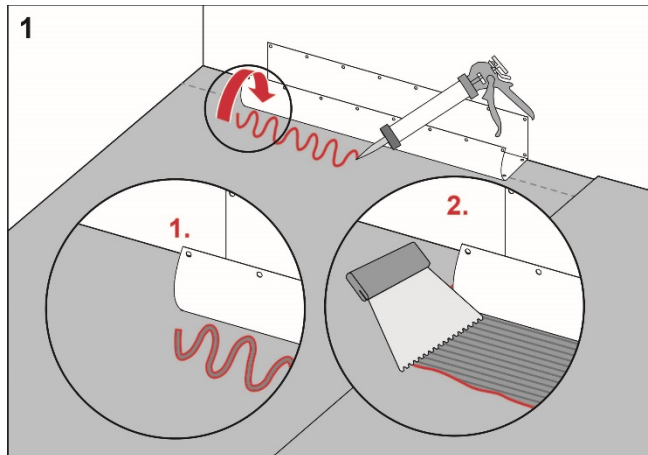
Execution

Install the TECE floor drain close to the wall in accordance with the instructions from TECE.

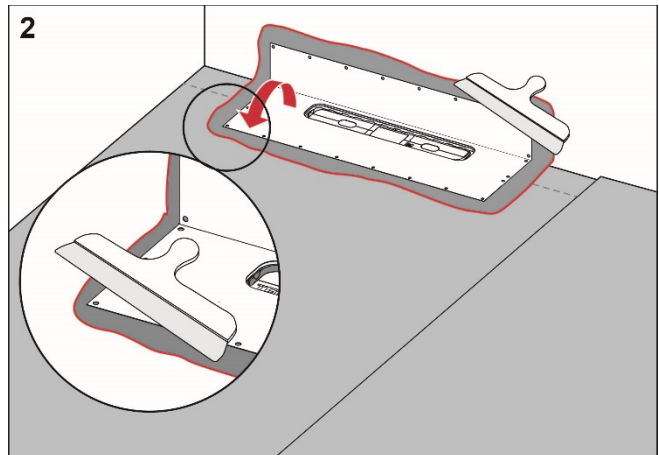
Preparation

Carefully check the factory-fitted drain collar. If it is damaged, the collar should be replaced.

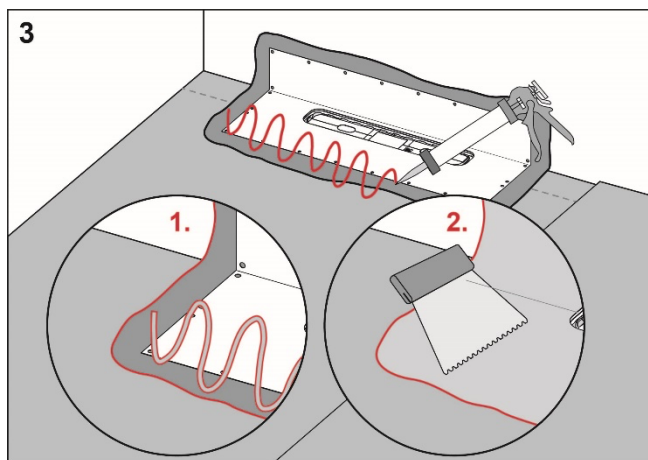
Procedure



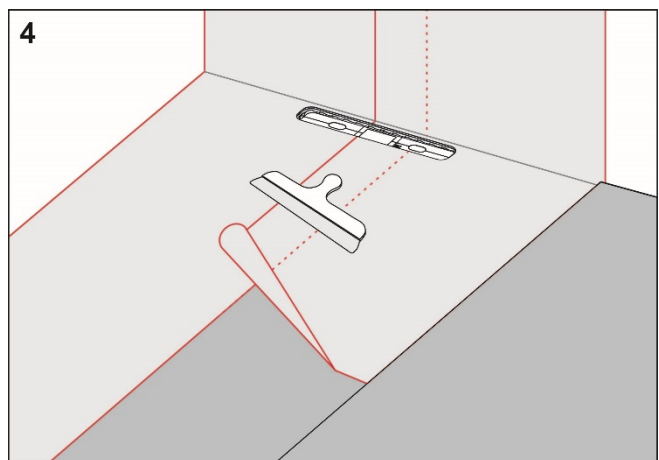
Apply Adda Skarvlim to the floor and wall areas which the drain collar will cover. Spread the adhesive with a fine-toothed adhesive spreader.



Unfold the collar on the floor and wall. Carefully smooth out the collar and ensure that no wrinkles or blisters occur.



Apply Adda Skarvlim on the drain collar and Adda Membran to the rest of the floor and wall area.



Install Adda Tätfolie and overlap the drain collar by a minimum of 35 mm. Seal all seams with Adda Membran.

**RI
SE**

C900686
C900687

Adda

For more information about Adda
Tätfolie:
www.addacenter.se

Complies with the
Trade Rules of the Swedish Ceramic Tile
Council for Wet Areas
BBV 21:1